

# COVID-19<sup>+</sup>

## United Way of the National Capital Area Emergency Assistance Fund

**30** Corporate and  
Foundation Partners

**206** Individual  
donors



**\$700K+**

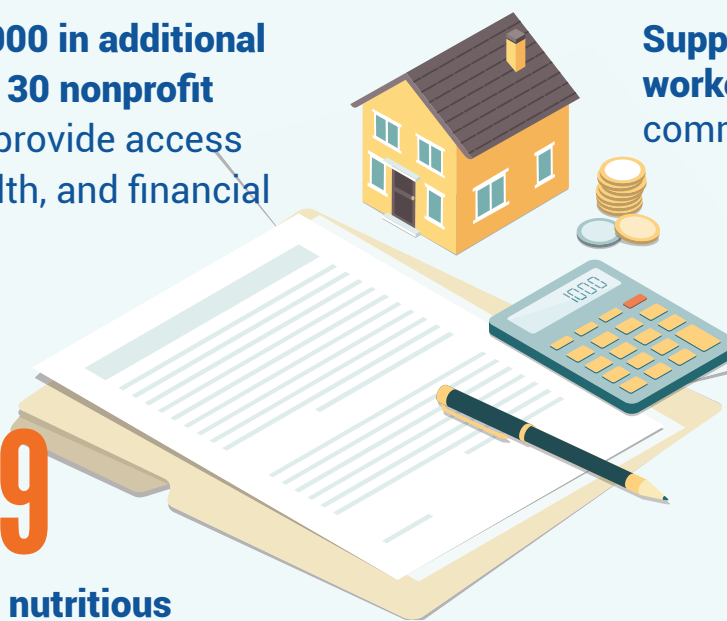
Over \$700,000 in additional capacity for 30 nonprofit partners to provide access to food, health, and financial stability

**600**

Supported 600 displaced workers from low income communities

**5,000**

Families received food and basic needs services



**8,459**

Healthy and nutritious meals delivered to frontline healthcare workers at 20 hospitals across the region

**635**

Meals delivered to seniors



**30,000**

Masks delivered to 27 organizations



**1,000**

Hygiene Kits

### STAND TOGETHER

"To know that Pepco's grant with United Way's guidance and valued stewardship is helping us support our customers during this time makes us humbled and proud to be part of the solution. We will continue to stand by United Way and this community in these unprecedented times."

Dave Velazquez, President, & CEO,  
Pepco Holdings

### NIMBLE & AGILE

"We're adapting to the demands and making sure each person who comes to us gets the financial planning help they need to make wise decisions and keep afloat during this time."

Dirk Butler, VP, Community Impact  
& Engagement, United Way NCA

### DRIVE IMPACT

"Goodwill of Greater Washington is honored to have the generous support of the United Way NCA as we continue to walk beside our 600 furloughed associates."

Catherine Meloy, President & CEO,  
Goodwill of Greater Washington

### THANK YOU

"We are so grateful for these special donors who helped us provide creative and innovative solutions during the initial response and look forward to even greater impact together in the long-term recovery as we rebuild our community."

Rosie Allen-Herring, President & CEO,  
United Way NCA

*United Way NCA fights for the health, education and financial stability of every person in our community.*

**GIVE. VOLUNTEER. ADVOCATE**



United Way  
of the National Capital Area  
UnitedWayNCA.org

Data from Mar-May 2020